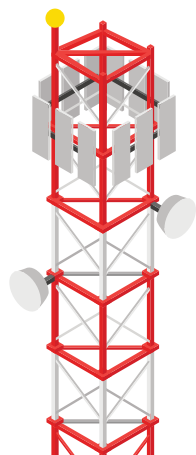
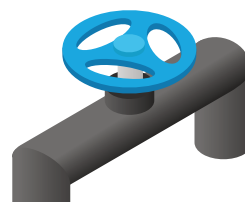
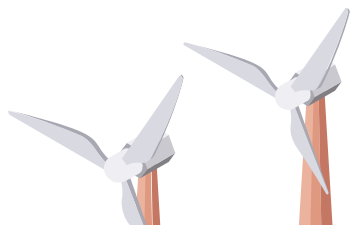
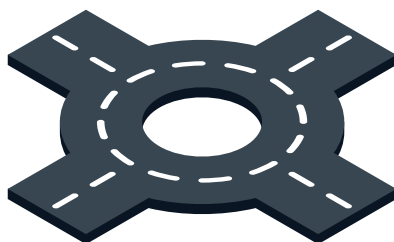
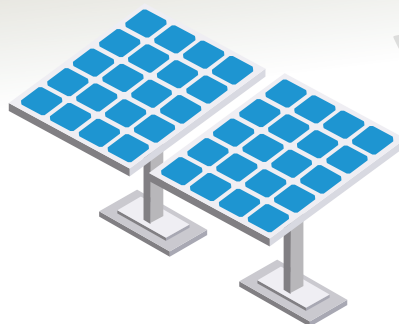
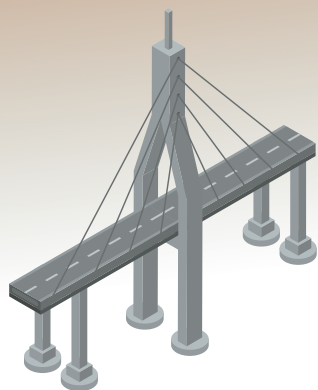
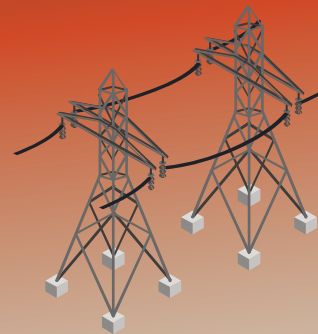


Innovating

Utilities and Infrastructure Management

with **GeoRobotiX**

Powered by
OpenSensorHub



Innovating Utilities and Infrastructure Management

Optimize utility management by integrating sensor networks, drones, and automated monitoring systems to provide real-time insights into energy, water, sanitation, and telecommunications infrastructure.

Address challenges in utility corridor monitoring, pipeline inspection, and energy distribution by connecting diverse platforms—such as smart meters, reservoir sensors, and drone surveillance—through the GeoRobotix platform.

Unify Sensors, Things, and Robots across utility networks to enhance efficiency, prevent service disruptions, and ensure the longevity of critical infrastructure.

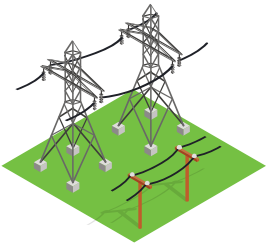
Leverage GIS data, aerial imagery, and ground-based sensors to track pipeline integrity, detect leaks, and manage energy grids with precision. GeoRobotix enables real-time deployment of inspection drones, automated maintenance systems, and repair teams to ensure uninterrupted service.

Advance utility management by transforming infrastructure data into web-accessible, location-aware services that support utility providers, municipalities, and private sector operators.

Delivers secure, scalable platform that enhances infrastructure resilience, improves operational efficiency, and supports the sustainable growth of utility networks.

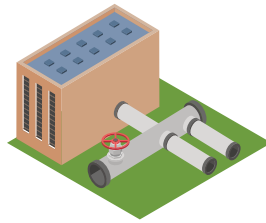


Integrating Sensors, Actuators and Processes



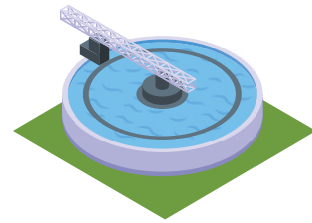
Energy Grid Monitoring

Smart meters, substation sensors, power line drones, and thermal imaging cameras to monitor grid performance, detect faults, and optimize energy distribution. GeoRobotix triggers automated maintenance protocols to reduce outages.



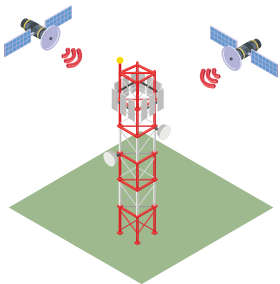
Water Infrastructure Monitoring

Pipeline flow sensors, leak detection systems, reservoir level monitors, and automated valves to manage water distribution and prevent losses. GeoRobotix deploys drones to inspect pipelines and reservoirs remotely.



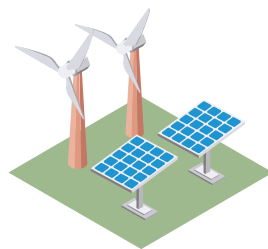
Sanitation and Wastewater

Sewer flow monitors, pump station sensors, and effluent quality sensors to manage wastewater systems and detect blockages or overflows. GeoRobotix automates early warnings and dispatches repair crews for rapid response.



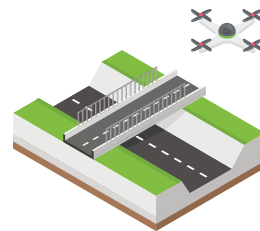
Telecommunications Networks

Tower integrity sensors, fiber optic cable monitors, and aerial surveillance drones to monitor telecom networks, ensuring uninterrupted service and quick response to outages.



Renewable Energy Management

Wind turbine sensors, solar panel performance trackers, and battery storage monitors to optimize renewable energy production. GeoRobotix automates performance checks and schedules preventive maintenance.



Utility Corridor Surveillance

Drone fleets, aerial LIDAR, and multispectral imaging to inspect utility corridors, track vegetation growth, and detect potential threats to infrastructure. GeoRobotix triggers alerts and dispatches maintenance crews as needed.

Frequently Asked Questions

How to deploy?

GeoRobotix simplifies deployment across utility networks by integrating with existing monitoring infrastructure and deploying drones and sensors for continuous observation. OpenSensorHub (OSH) ensures interoperability across energy, water, and telecom systems.

How to secure?

GeoRobotix secures critical infrastructure data through encrypted communications, access controls, and cyber resilience protocols, ensuring the safety and integrity of utility networks.

How to discover?

GeoRobotix enables utility operators to visualize infrastructure data by network segment, asset type, and performance metrics, ensuring proactive maintenance and efficient asset management.

How to dispatch?

GeoRobotix supports the dispatch of drones, automated maintenance units, and repair teams to utility corridors and infrastructure points, ensuring rapid response to service disruptions or system anomalies.

How to administer/manage?

GeoRobotix provides comprehensive tools to manage utility networks, monitor grid health, and oversee infrastructure projects. The platform scales to support expanding networks and evolving operational needs.



Getting started with GeoRobotix



Cloud Platform Subscription (SAAS)

Harness the GeoRobotix platform without bothering to own or manage your own Cloud computing resources. GeoRobotix provides various SaaS Cloud Subscription levels to allow you to securely leverage the power of your **Sensors, Things, and Robots** as **location-enabled, geospatially-aware web accessible services** immediately.



On-Premises/Self-Hosted Platform Subscription

Deploy the GeoRobotix platform on-premises or on your own Cloud computing resources. Whether on your own compute infrastructure, or in your leased commercial Cloud, we offer "OnPrem" SaaS Subscriptions that let you deploy the GeoRobotix platform and securely integrate it into your larger enterprise capabilities.



Expert Services

Beyond GeoRobotix platform subscriptions, and the support and maintenance services included therein, GeoRobotix offers world leading expertise to formulate and implement your next generation **sensor, IoT, and connected systems** vision. GeoRobotix offers strategies and decades of implementation know-how that you can harness to master the world around you.

Contact us

sales@georobotix.com

[@GeoRobotix](#)

www.GeoRobotix.com



GeoRobotix

Copyright 2025
All rights reserved.